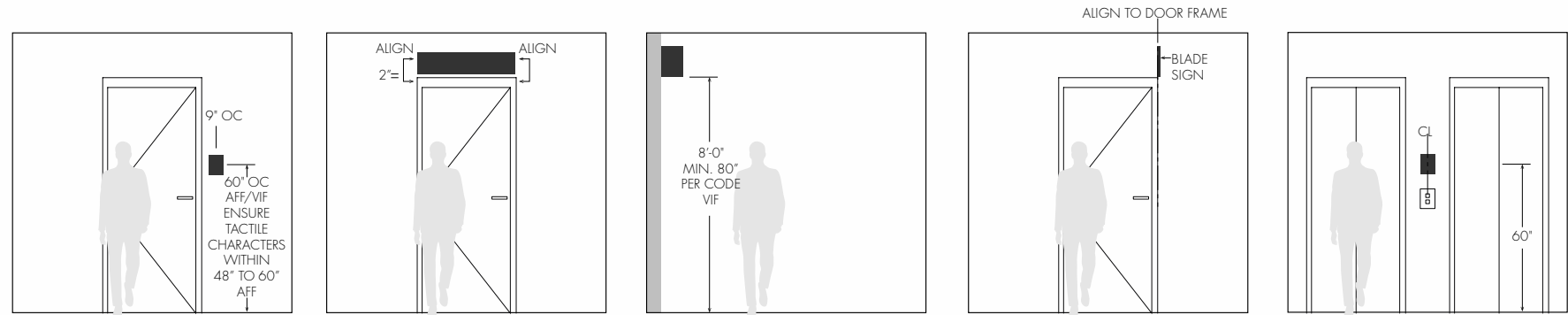


GENERAL MOUNTING HEIGHTS & LOCATIONS (SEE INTENT SHEETS FOR ADDITIONAL/SPECIFIC DETAILS)



1.0 | GENERAL & ADA SIGNS
SCALE: 1/4" = 1'0"

2.0 | OVERHEAD SIGNS
SCALE: 1/4" = 1'0"

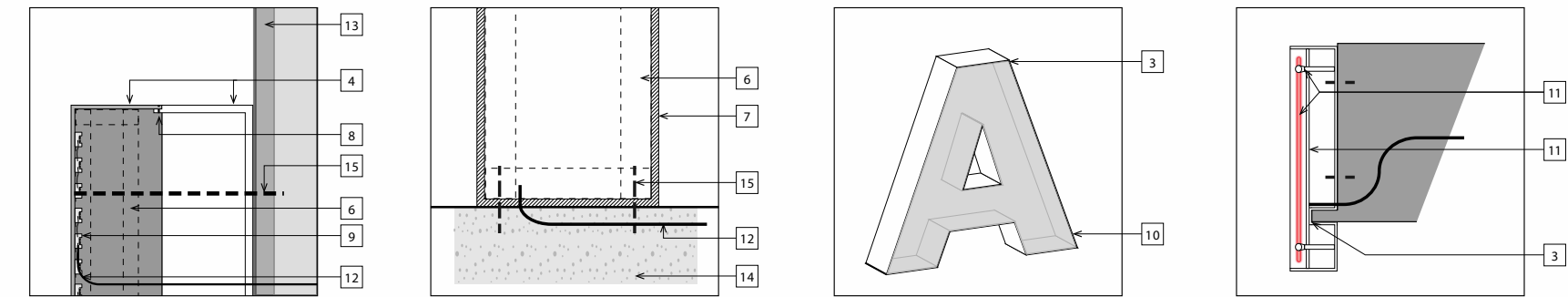
3.0 | OVERHEAD BLADE SIGNS
SCALE: 1/4" = 1'0"

4.0 | OVERHEAD BLADE SIGNS
SCALE: 1/4" = 1'0"

5.0 | ELEVATOR EVAC MAP
SCALE: 1/4" = 1'0"

- ANY GENERAL SIGNS, PERMANENT ROOM, STAIRWELLS & ELEVATOR MAPS SIGNS
- PROVIDE SAME SIZED & FINISHED 1/8" THICK BACKPLATE FOR ALL SIGNS LOCATED ON GLASS SURFACE, MTD TO INTERIOR SURFACE
- ABOVE ENTRANCE SIGNS & LETTERS; MAINTAIN CLEARANCE WHERE NECESSARY/POSSIBLE
- ABOVE ENTRANCE SIGNS PERPENDICULAR MOUNT
- ALIGN TO THE DOOR FRAME, VERIFY PLACEMENT FOR OTHER CONDITIONS
- ELEVATOR EVAC MAP, COORDINATE W/ ELEVATOR HARDWARE

GENERAL NOTES



GENERAL MATERIALS, FINISHES & FABRICATION NOTES (ALSO SEE SIGNAGE SPECIFICATION DOCUMENTS)

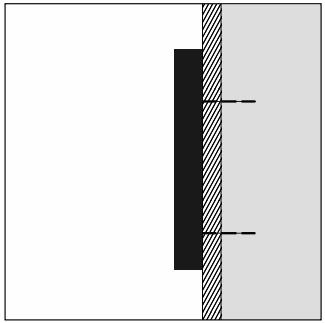
- CONFIRM ALL SIGNS MEET MUNICIPAL AND INTERNATIONAL CODES.
- ALL SIGN SURFACES INCLUDING BACKS OF SIGNS EXPOSED TO PUBLIC VIEW ARE TO BE FINISHED.
- ALL FABRICATED OR CUT SIGN ELEMENTS TO FEATURE CLEAN & CRISP CORNERS. NO ROUNDED CORNERS OF LETTERS OR SIGN ELEMENTS. ANY NOTCHES, CUT OUTS, WELDS TO BE CLEAN & FINISHED.
- FABRICATED & ADJOINING SURFACES TO BE SEAMLESS & FLUSH; WHERE SEAMS ARE NECESSARY, THEY ARE TO BE TIGHT, CLEAN & HAVE A SEAMLESS APPEARANCE.
- ALL SIGNS TO BE FABRICATED W/ MATERIALS & TECHNIQUES FOR THE ENVIRONMENT & WEATHER EXPOSURE THAT THEY ARE SCHEDULED FOR - EXTERIOR OR INTERIOR.
- AS A (TYPICAL) EXAMPLE - EXTERIOR ADA SIGN WHERE SPECIFIED SHOULD UTILIZE EXTERIOR GRADE PHOTO-POLYMER.
- ALL SIGNS & RELATED COMPONENTS ARE TO BE ENGINEERED INCLUDING ANY STRUCTURE WITHIN.
- ENSURE THICKNESS OF SUBSTRATE USE DOES NOT CAUSE BOWING OR OIL-CANNING.
- ALL HARDWARE TO BE CONCEALED. WHERE THEY NEED TO BE EXPOSED, THEY SHOULD BE COUNTERSUNK, FINISHED FLUSH TO MATCH ADJACENT MATERIAL TO APPEAR SEAMLESS.
- ALL ILLUMINATION TO BE EVEN, WITHOUT HOTSPOTS OR SCALLOPING; COORDINATE W/ SIGNAGE INTERIOR ELEMENTS & STRUCTURE TO ENSURE.
- ALL ILLUMINATED FACES TO BE FLUSH W/ ADJACENT SIGN FINISH AS PER #4 ABOVE. NO TRIM CAPS ARE ALLOWED.
- ALL NEON (FAUX OR ACTUAL) TO BE DOUBLE STROKE MINIMUM, UNLESS NOTED. NEON TO BE ON STAND-OFFS & PROVIDE SIGN FALSE BACK AS NEEDED TO ENSURE OPTIMAL NEON DISPLAY.
- ALL POWER & DATA PROVISION TO BE CONCEALED & COORDINATED. DATA PROVISION TO BE COORDINATED W/ ARCHITECTURAL & OWNERS FOR SHOW CONTROL HARDWARE LOCATION & INTEGRATION WITH BAS SYSTEM AS NECESSARY.
- COORDINATE W/ ALL STRUCTURE, ARCHITECTURAL & SITE CONDITIONS.
- ALL FOUNDATION/FOOTER TO BE ENGINEERED & COORDINATED AS PER #13 ABOVE.
- ALL ATTACHMENTS TO BE ENGINEERED & COORDINATED AS PER #13 ABOVE. MECHANICAL ATTACHMENTS & HARDWARE ARE TO BE CONCEALED UNLESS IT IS AN INTEGRAL PART OF THE DESIGN AESTHETICS.
- LOCATE UL LABELS & DISCONNECT SWITCH OUT OF PUBLIC VIEW AS ALLOWABLE.
- ALL SIGNS TO RECEIVE ANTI-GRAFFITI CLEARCOAT AND/OR PROTECTIVE OVERLAMINATE. IN ADDITION, EXTERIOR SIGNS TO RECEIVE UV PROTECTION. WHERE NECESSARY AND FOR MESSAGE CHANGABILITY, APPLICATION OF VINYL TO BE APPLIED AFTER CLEAR COAT IS APPLIED.
- MEASURE INSTALLATION SPACES IN FIELD & ON ARCHITECTURAL DRAWINGS TO CONFIRM FINAL BUILT DIMENSIONS TO ACCEPT SIGNS BEFORE FABRICATION.

AAC

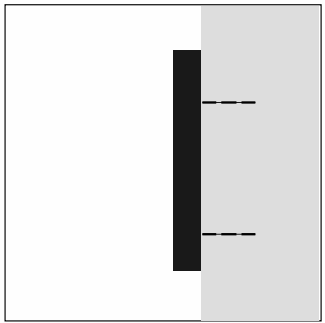
PZ24-30000010

11/05/2024

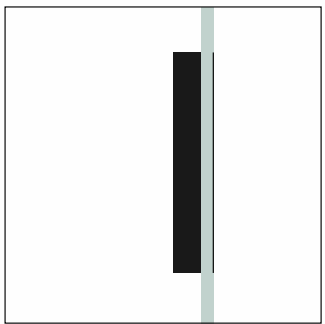
MOUNTING WALL TYPES/CONDITIONS



- 6.0 | DRYWALL
- VHB TAPE, SILICONE, AND THREADED STUDS AS REQUIRED.



- 7.0 | MASONARY/TILE
- MECHANICALLY MOUNTED TO THE WITH STUDS, ANCHORS & SILICONE. NECESSARY/POSSIBLE



- 8.0 | GLASS
- VHB TAPE & PROVIDE 3M VINYL BACKER

NOTES: ALL LOGOS & MESSAGES ARE TBD. TO BE PROVIDED & APPROVED BY OWNERSHIP.

DESIGN INTENT: NOT FOR CONSTRUCTION

Client:



500 Boylston Street,
Suite 2100
Boston, MA 02116

Architects:

Selbert
Perkins
Design.

Selbert Perkins Design
Collaborative, Inc.

432 Culver Boulevard
Playa del Rey, CA 90293
T 310.822.5223
F 310.822.5203

210 W Main Street
Barrington, IL 60010
T 312.876.1839
F 312.993.0167

© 2023 Selbert Perkins Design Collaborative, Inc.
No portion of this drawing may be reproduced without written consent of Selbert Perkins Design Collaborative, Inc.

Sheet Title:

GENERAL NOTES

6				
5				
4				
3				
2				
1				
Rev	Descrpt	By	Date	

Date October 8, 2024
Scale AS NOTED

Sheet No. EG-3